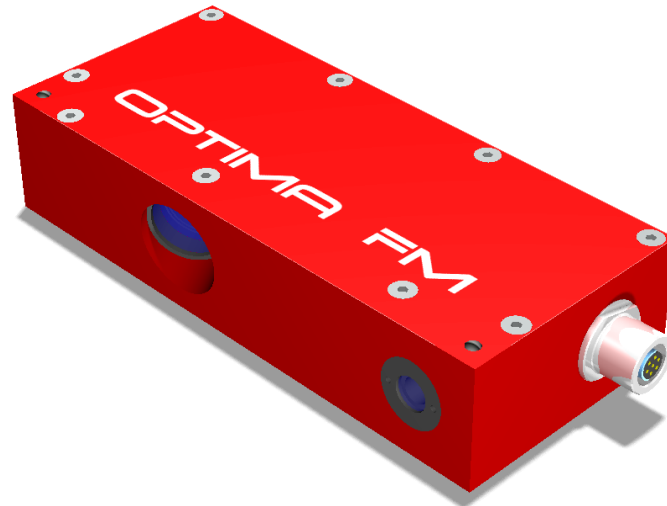


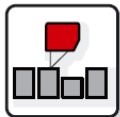
# Laser-Distance-Sensor OPTIMESS FM



- Minimum size and weight
- Digital processing of measured values
- Analog output

The opto-electronic sensor OPTIMESS LC-H is a device for no-contact distance measurement especially for test drive. This sensor distinguishes itself by a great independence of the measurement accuracy on different material surfaces and from the ambient light.

The OPTIMESS LC-H works according to the triangulation principle. The laser spot projected by a laser diode via an optical system is represented at an angle on a CCD line by a receiving optical system. The processor integrated in the sensor processes the optical distance information and outputs them as an analog value.

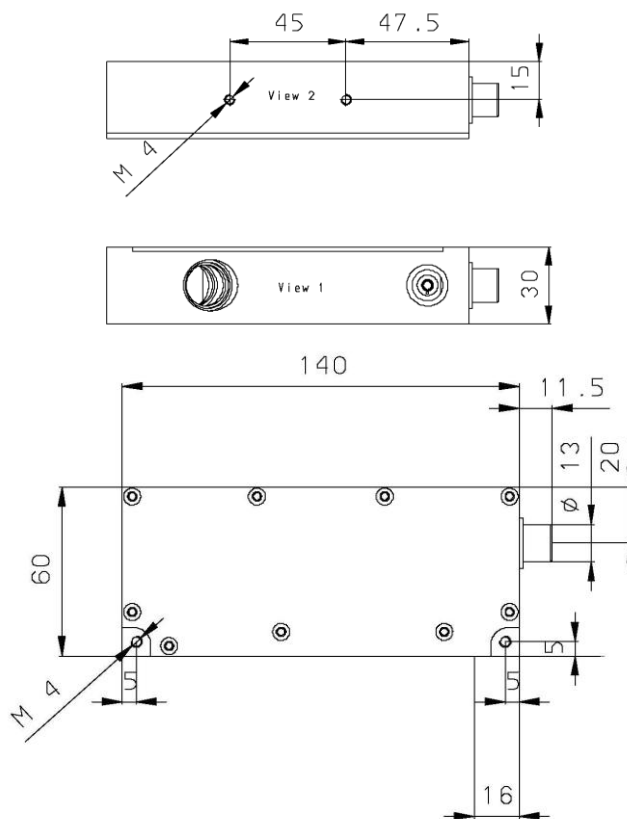


Distance  
measurement,  
position control



Car industry,  
test drive



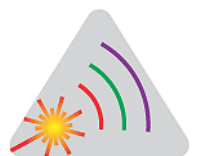


Measuring range [mm]	356 (14")
Stand off [mm]	343
Resolution [mm] [1]	0.5
Linearity	$\leq \pm 0.3\%$ FSO
Reproducibility	$\leq \pm 0.1\%$ FSO
Bandwidth [2]	100Hz max.
Filter [2]	Bessel
Measuring rate [2]	25 kHz
Light source	Laserdiode
Spot diameter [2]	$\sim 1 \times 5$ mm
Wave-length [2]	660nm
Laser safety class [2]	3a
Photo detector	PSD
Supply voltage	$\pm 15V / 150mA, \pm 5\%$
Output [2]	$\pm 5V / \pm 10V$
Operating temperature	-20°C bis 50°C non condensation
Dimensions	60 x 140 x 30mm
Weight	ca. 390g
Protection class	IP 65

[1] Standard settings with filter 20Hz

[2] Factory-set depending on the application

**Dr. D. Wehrhahn**  
**Meßsysteme für die Qualitätssicherung**



Hildesheimer Straße 140 D-30173 Hannover

Fon +49 511 51 26 65

Mail info@drwehrhahn.de

Fax +49 511 52 21 52

Web www.drwehrhahn.de